

# theLeda S8-100 BK

Item no.: 1020801

**theben**

LED-Strahler  
theLeda S

## Description

- LED spotlight with 8,5 W and integrated motion detector
- Colour temperature 4000 K
- Wall mounting
- Additional output for switching of other luminaires/consumers
- Spotlight can be swivelled  $\pm 40^\circ$  horizontally, and adjusted  $70^\circ$  downwards, wall-wash functionality by swivelling  $180^\circ$
- Suitable for outdoor use
- Automatic lighting control based on presence and brightness
- $180^\circ$  detection angle at a detection range of 10 m
- Area limit via lens attachment
- Manual control via push-button possible
- Test function
- Twilight switch function
- Networkable via wire



## Technical data

| theLeda S8-100 BK             |   |
|-------------------------------|---|
| Operating voltage             | 230 V AC                                |
| Frequency                     | 50 Hz                                   |
| Stand-by consumption          | ~0.5 W                                  |
| Colour                        | Black (similar RAL 9005)                |
| Switching output              | Light                                   |
| Installation type             | Wall installation                       |
| LED output (lighting current) | 900 lm                                  |
| Colour temperature            | 4000 K, neutral white                   |
| Colour rendering index        | < 80                                    |
| Service life                  | L80/B10/45.000 h   L70/<br>B50/50.000 h |
| Setting range brightness      | 2 – 500 lx                              |

| theLeda S8-100 BK              |                |
|--------------------------------|----------------|
| Detection angle                | $180^\circ$    |
| Installation height            | 1.8 – 2.5 m    |
| Light switch-off delay         | 10 s-30 min    |
| Incandescent/halogen lamp load | 500 W          |
| LED lamp < 2 W                 | 20 W           |
| LED lamp 2-8 W                 | 100 W          |
| LED lamp > 8 W                 | 100 W          |
| Ambient temperature            | -20°C ... 55°C |
| Protection class               | II             |
| Type of protection             | IP 55          |

Subject to technical changes and misprints

additional information at: [www.theben.de/product/1020801](http://www.theben.de/product/1020801)

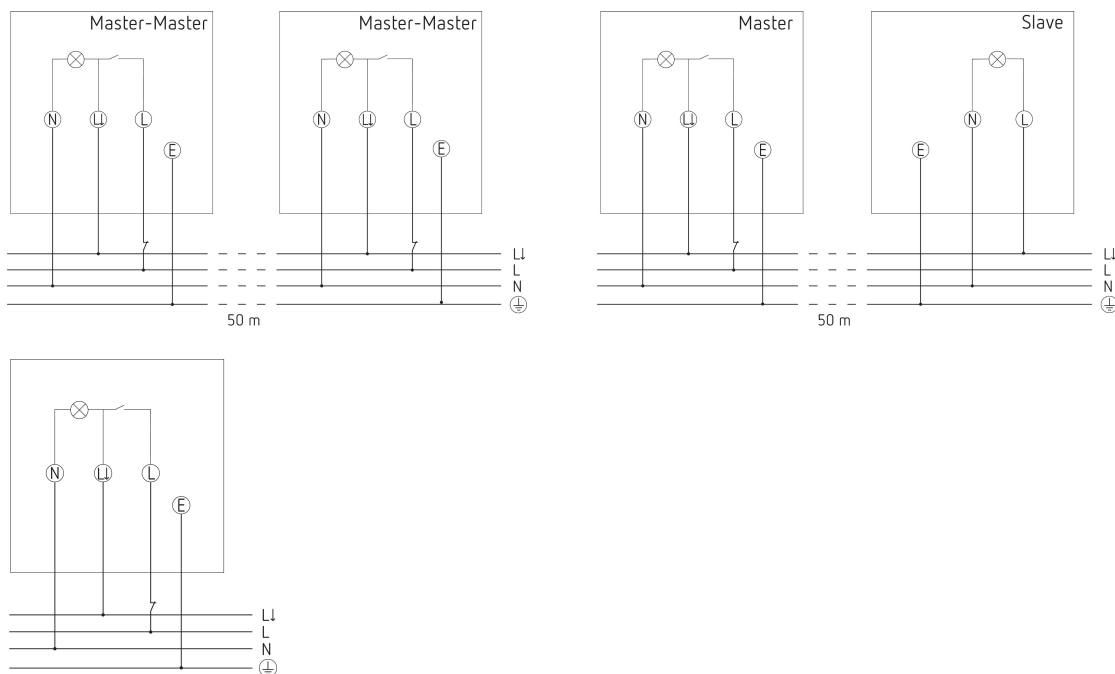
The load data are determined with exemplary selected illuminants and are therefore typical data due to the large number of available products.

# theLeda S8-100 BK

Item no.: 1020801

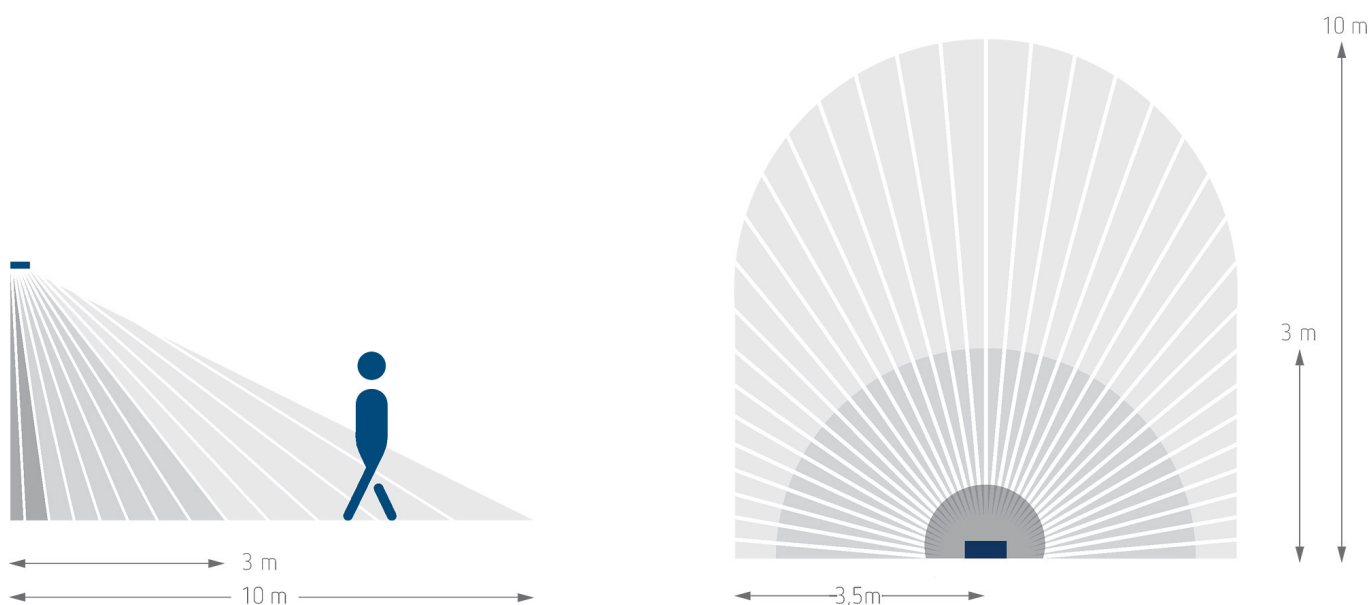


## Connection example



## Detection range for planning applications at a temperature of 21 °C

| Mounting height (A) | Diagonally (t) | Head on to (R) |
|---------------------|----------------|----------------|
| 2.5 m               | 10 m           | 3 m            |



Subject to technical changes and misprints

additional information at: [www.theben.de/product/1020801](http://www.theben.de/product/1020801)

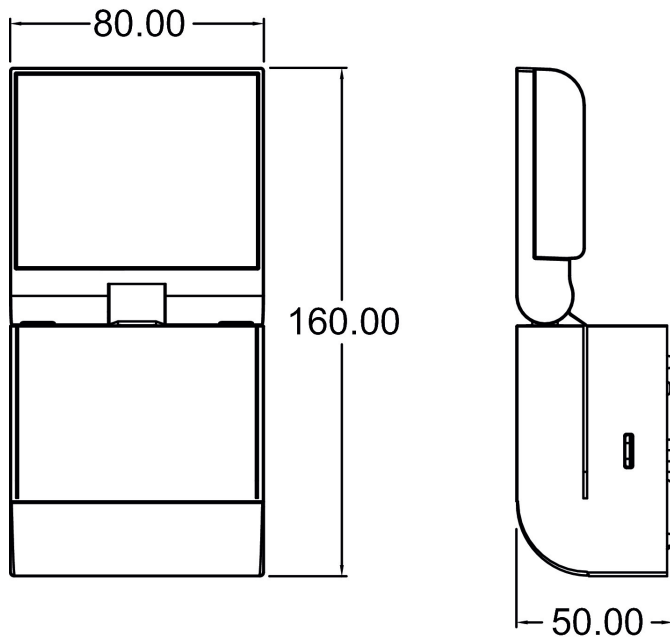
The load data are determined with exemplary selected illuminants and are therefore typical data due to the large number of available products.

# theLeda S8-100 BK

Item no.: 1020801

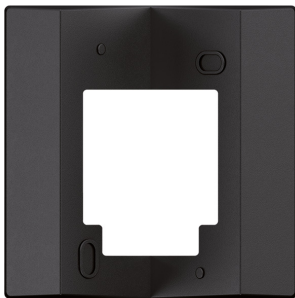


## Scale drawings

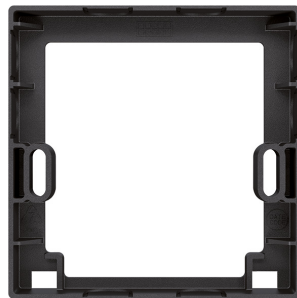


## Accessories

**Corner angle 10 BK**  
Item no.: 9070987



**Spacer 10 BK**  
Item no.: 9070988



Subject to technical changes and misprints

additional information at: [www.theben.de/product/1020801](http://www.theben.de/product/1020801)

The load data are determined with exemplary selected illuminants and are therefore typical data due to the large number of available products.